

KingBOX MS-9A66

Outperform Fanless Systems with Powerful 4th Gen Scheme

Rugged, Scalable, Versatile



Intelligent Transportation

Security Automation

Facility Management

Utility Automation

Environment Monitoring

► Scalable High Performance

Scalable CPU options to support the highest performance that fulfills any demanding application requirements.



► Hassle-free Fanless Design

Fanless design to minimize downtime and maximize MTBF, ensuring the long-term hassle-free operation with silence.



► Wide-range DC Power Input

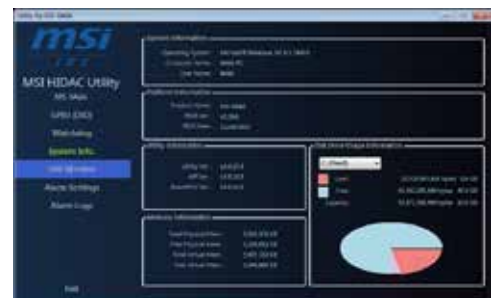
Wide-range DC power design that allows 9 to 36 VDC input, catering to any industrial application scenes.

► Superior Expansion Versatility

Rich expansion options that come with DIO, 1 PCIe x16 and 3 PCI slots or 2 PCIe x8 and 2 PCI Slots, both offering versatile capability in system integration.

► Easy Configuration via Friendly API

Easy setup and configuration via MSI's self-developed friendly API, facilitating your installation and maintenance.



Smart mechanical design for easy access

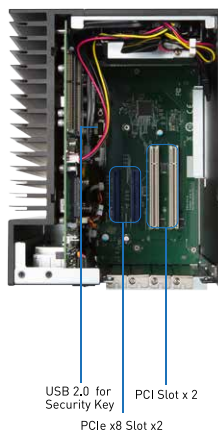
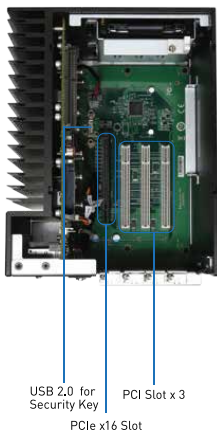
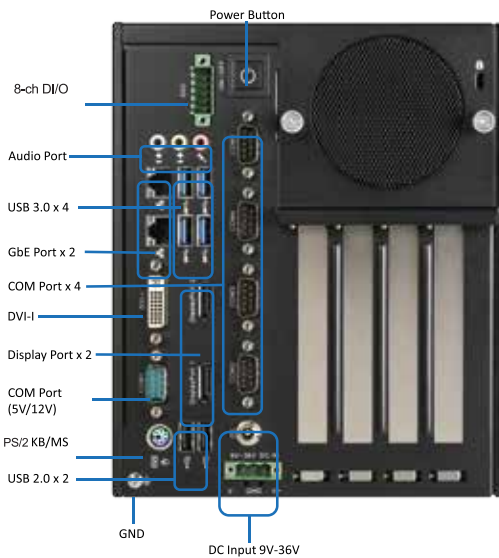


01. Unwind the thumbscrew

02. Remove the top cover

03. Easily access interior and I/O

KingBOX MS-9A66



System		
CPU	Intel 4th Gen Intel® Core™ i5-4570TE, Dual Core	Intel 4th Gen Intel® Core™ Celeron G1820TE, Dual Core
Chipset	Intel® Q87/C226 Express	
Memory	Dual-channel DDR3 1600/1333MHz, up to 16G B	
Graphic		
Controller	Intel® HD Graphics 4600	Intel® HD Graphics
Multiple Display	3 Independent Displays (DP+DP+VGA or DP+DP+DVI-D)	
Display Interface	DP up to 3840 x 2160 DVI-I up to 1920 x 1200	
I/O Interface		
Ethernet	2 GbE LAN (1 x Intel® I217; 1 x Intel® I210-AT)	
Audio	1 x Mic-in / 1 x Line-out / 1 x Line-in	
USB	4 x USB 3.0 / 3 x USB 2.0 (including one port for Security Key)	
Serial	5 x COM COM1: RS232/422/485, 0V/5V/12V COM2: RS232/422/485, 0V COM3~5: RS-232, 0V	
Parallel	1	
PS/2	1	
Expansion Slot		
PCIe x16	1 for Q87 SKU	
PCIe x8	2 for C226 SKU	
PCI	3 for Q87 SKU, 2 for C226 SKU	
Storage		
SATA	2 x 2.5" HDD / SSD	
CFast	1	
Power Supply		
DC Input	DC-In 9-36V wide-range pluggable connectors with latch (GND, V-, V+)	
Environment		
Operating Temp.	-10 ~ 50°C for industrial DC power	
Operating Humidity	10 ~ 90%, non-condensing	
Storage Temperature	-20 ~ 80°C	
Storage Humidity	10 ~ 90%, non-condensing	
Vibration	Operating, 0.25 Grms, 5-300Hz, 3axes (w/ HDD)	
Shock	Operating, 3 G, half sine 11 ms duration (w/ HDD)	
Physical Characteristics		
Dimensions	175mm x 225mm x 218mm	
Weight	4.86 kg	
Mounting	Wall mount	
Certification		
EMC	FCC, CE, C-Tick, VCCI, BSMI	

Product Features

- 4th Gen Intel® Core i7/i5/i3, Pentium, and Celeron® processor
- Fanless design to support Intel® 4th Gen CPU (up to 35W)
- Removable cover for easy maintenance(HDD, memory, CFast, expansion slots)
- Wide range 9~36V DC power input
- Support AT power mode
- Optional system fan module
- 3 independent display with DVI-I and 2 DP
- Support 4 expansion slots: 1*PCIe x16; 3*PCI with Q87 SKU, 2*PCIe x8 + 2*PCI with C226 SKU
- Support Data Acquisition(DAQ), video capture and VGA card for PCI express slot
- GPIO supports 5~24V for automation
- 100 G anti-shock and 1 Grms anti-vibration



<http://ipc.msi.com>
ipcsales@msi.com